



LAMPTON PARKSIDE

WEST LONDON TW3

THE APARTMENTS AT THE EVERGREENS

A collection of 1 & 2
bedroom apartments and
3 bedroom duplexes



INTRODUCING THE APARTMENTS AT THE EVERGREENS

A COLLECTION OF STYLISH, MODERN
1 AND 2 BEDROOM APARTMENTS, AND
3 BEDROOM DUPLEXES, ALL WITH THEIR OWN
PRIVATE OUTDOOR SPACE.

Ideally located at Lampton Parkside, these homes combine
a beautiful green setting next to 40 acres of parkland,
with all the amenities, opportunities and connections of
London living. It is a place where you can savour the city,
delight in nature and live life with more vitality.



AN UPLIFTING PARKSIDE LOCATION

ENJOY LIVING IN A FLOURISHING COMMUNITY,
WHERE YOU CAN EMBRACE A VIBRANT WEST
LONDON LIFESTYLE.

In a prime position next to Lampton Park, The Evergreens offer plenty of opportunities to connect with the outside. An elevated central garden provides a leafy outlook for the homes, and cleverly conceals undercroft car parking. There is also cycle storage available, so that you can travel by bicycle easily and conveniently. Some duplexes have their own garden, while all apartments feature a private balcony or terrace, ideal for morning coffee or evening drinks.

A concierge service, located on the ground floor of the nearby Bellevue Building, is available to all apartments. From receiving deliveries while you are out to being a central hub for information, this personal service is here to make life at Lampton Parkside even easier.

Attractive gardens, landscaping and leafy streets create a welcoming environment, where residents can pause, meet and form friendships. Neighbouring Lampton Park features 40 acres of green space, with sports fields, tennis courts, a bowling green, playground, wooded areas and historic rose garden. And with Hounslow Central Tube station just a four minute walk and town centre less than half a mile away, you have everything you need on your doorstep.



APARTMENTS AND DUPLEXES SPECIFICATION

APARTMENTS AND DUPLEXES ARE LIGHT, COMFORTABLE
AND BEAUTIFULLY FINISHED, WITH FLEXIBLE SPACES WHERE
YOU CAN WORK, RELAX, SOCIALISE AND ENTERTAIN.



KITCHEN

- Matt finish handleless units with soft close to doors and drawers
- Caesarstone worktop with matching upstands and splashback behind hob
- Induction hob
- Integrated single oven
- Integrated microwave
- Integrated dishwasher
- Integrated fridge/freezer
- Integrated cooker hood
- Stainless steel undermounted sink with contemporary brushed steel mixer tap
- LED feature lighting to wall units
- Washer/dryer (freestanding in hallway cupboard)

Kitchen designs and layouts vary; please speak to our Sales Executives for further information

EN-SUITE

- Low profile shower tray with glass shower door
- Feature mirror with shelf to match vanity top (where layout allows)
- Heated chrome towel rail

BATHROOM

- Bath with shower over and glass screen
- Bath panel to match vanity top
- Feature mirror with shelf (where layout allows)
- Heated chrome towel rail

DECORATIVE FINISHES

- Painted solid core or composite front entrance door with multi-point locking system
- High efficiency double glazed aluminium timber composite windows
- Timber staircase with carpeted treads and risers to duplexes
- White painted flush internal doors with contemporary dual finish ironmongery

- Built-in mirrored wardrobe with sliding doors to principal bedroom
- Square cut skirting and architrave
- Walls painted in white emulsion
- Smooth ceilings in white emulsion

FLOOR FINISHES

- Amtico flooring to entrance hall, kitchen/dining/living room, bathroom, en-suite and WC
- Carpet to bedrooms, family room, stairs and landing to duplexes

HEATING AND WATER

- Underfloor heating throughout each apartment
- Heating via communal heating plant

ELECTRICAL

- Downlights to entrance hall, kitchen/dining/living room, kitchen/dining room, bathroom, en-suite and WC
- Pendant fittings to family room and all bedrooms
- LED feature lighting to wall units in kitchen
- Shaver sockets to bathroom and en-suite
- TV, BT and data points to selected locations
- Wiring for customer's own broadband connection
- Pre-wired for customer's own Sky Q connection
- Video entry system to every apartment accessed from communal core, linked to main entrance door
- External lighting to balcony/terrace
- Hard-wired smoke and heat detectors
- Sprinkler system to all apartments
- Spur for customer's own installation of security alarm panel

EXTERNAL FINISHES

- Aluminium decking to balconies
- Private tiled terraces to first floor apartments and duplexes

COMMUNAL AREAS

- Fob controlled access system to entrance lobby where apartments accessed off communal core
- Lift access to all floors where accessed off main communal core
- Cycle and bin storage space
- Letterboxes provided within communal entrance lobby

PARKING

- Right to Park car parking spaces available for purchase – please speak to our Sales Executives
- Electric car charging points available to selected parking spaces

CONSTRUCTION

- Steel reinforced concrete frame with outer brickwork, cavity filled with insulation
- Concrete floors
- Exterior treatments are a combination of buff and red facing bricks with biodiverse roofs

GENERAL

- 10 year NHBC warranty
- 999 year lease
- A service charge will be payable for the maintenance of the shared facilities and communal areas

The apartment buildings, landscaped area and the shared facilities at Lampton Parkside will be managed and maintained by Notting Hill Genesis. All residents will be required to pay annual service charge contributions for the management, repair and maintenance of these areas, which will be collected by Notting Hill Genesis. We are unable to accommodate any individual changes, additions or amendments to the specification, layout or plans to any individual home. Please note that it may not be possible to obtain the products as referred to in the specification; in such cases a similar alternative will be provided. Hill reserve the right to make these changes as required.

SITE PLAN

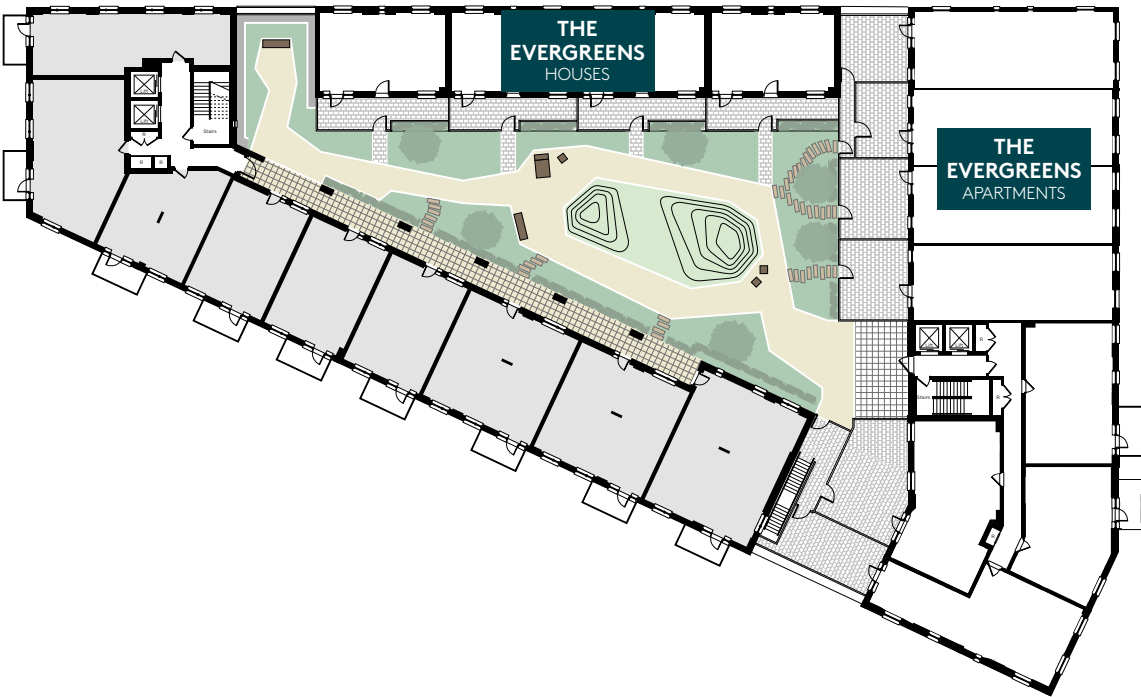


THE EVERGREENS

RESIDENTS' PARKING (GROUND)



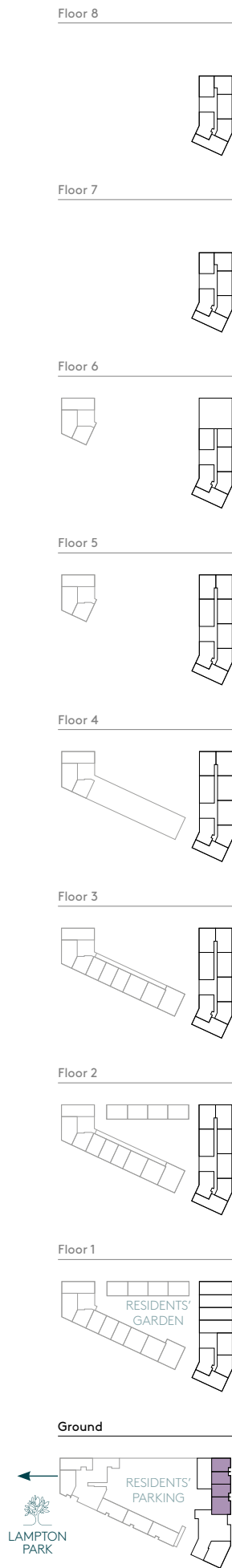
RESIDENTS' GARDEN (FLOOR 1)



THE EVERGREENS

APARTMENTS & DUPLEXES





THE EVERGREENS

GROUND FLOOR

E3.1 – 3 bedroom duplex (lower)

See page 30 for details

E3.2 – 3 bedroom duplex (lower)

See page 31 for details

E3.3 – 3 bedroom duplex (lower)

See page 32 for details

E3.4 – 3 bedroom duplex (lower)

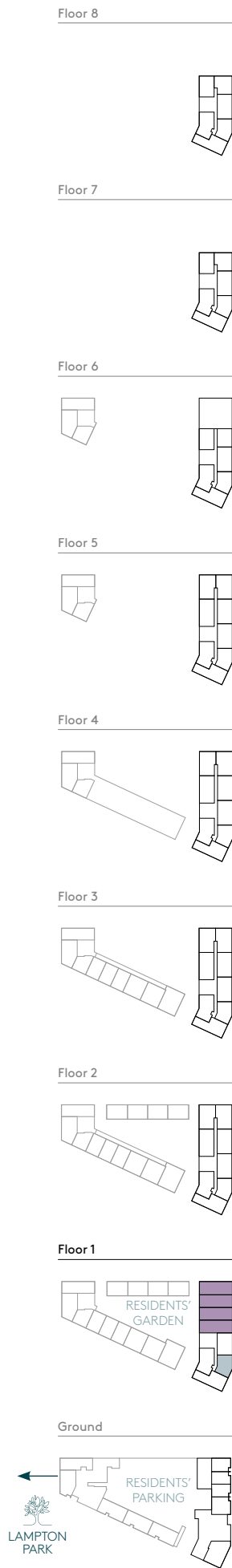
See page 33 for details

3 bedroom duplex Active charging points

C = Cupboard W = Wardrobe R = Riser Cupboard US = Utility Store WD = Washer/Dryer MVHR = MVHR
 HIU = Heat Interface Unit = Indicative Wardrobe Position

All floorplans are not to scale. Layouts provide approximate measurements only and are subject to planning. Dimensions, which are taken from the indicated points of measurement, are for guidance only and are not intended to be used for window treatments or items of furniture. Bathroom and kitchen layouts are indicative only and are subject to change. Wardrobe size and position may vary. The total square footage given is an estimate only. In the event of your making an offer you should refer to the contract documentation for information and contractual provisions relating to net sales area. The information contained within this document does not constitute part of any offer, contract, or warranty. Whilst the plans have been prepared with all due care for the convenience of the intending purchaser, the information contained herein is a preliminary guide only.





THE EVERGREENS

FLOOR 1

E3.7 – 1 bedroom apartment

Kitchen/Dining/Living	3.70m x 5.80m	12'1" x 19'0"
Bedroom	4.00m x 3.85m	13'1" x 12'7"
Balcony	1.65m x 3.50m	5'4" x 11'5"

E3.1 – 3 bedroom duplex (upper)

See page 30 for details

E3.2 – 3 bedroom duplex (upper)

See page 31 for details

E3.3 – 3 bedroom duplex (upper)

See page 32 for details

E3.4 – 3 bedroom duplex (upper)

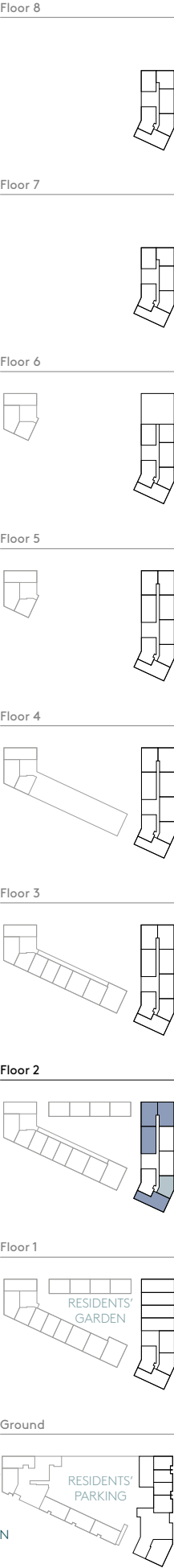
See page 33 for details

1 bedroom apartment 3 bedroom duplex

C = Cupboard W = Wardrobe R = Riser Cupboard US = Utility Store WD = Washer/Dryer MVHR = MVHR
HIU = Heat Interface Unit [] = Indicative Wardrobe Position

All floorplans are not to scale. Layouts provide approximate measurements only and are subject to planning. Dimensions, which are taken from the indicated points of measurement, are for guidance only and are not intended to be used for window treatments or items of furniture. Bathroom and kitchen layouts are indicative only and are subject to change. Wardrobe size and position may vary. The total square footage given is an estimate only. In the event of your making an offer you should refer to the contract documentation for information and contractual provisions relating to net sales area. The information contained within this document does not constitute part of any offer, contract, or warranty. Whilst the plans have been prepared with all due care for the convenience of the intending purchaser, the information contained herein is a preliminary guide only.





THE EVERGREENS

FLOOR 2

E3.12 – 1 bedroom apartment

Kitchen/Dining/Living		
3.70m x 5.80m	12'1" x 19'0"	
Bedroom		
4.00m x 3.85m	13'1" x 12'7"	
Balcony		
1.65m x 3.50m	5'4" x 11'5"	

E3.11 – 2 bedroom apartment

Kitchen/Dining/Living		
7.60m x 3.35m	24'11" x 10'11"	
Principal Bedroom		
5.20m x 2.65m	17'0" x 8'8"	
Bedroom 2		
3.35m x 3.40m	10'11" x 11'1"	
Balcony		
3.50m x 1.65m	11'5" x 5'4"	

E3.15 – 2 bedroom apartment

Kitchen/Dining/Living		
7.10m x 3.60m	23'3" x 11'9"	
Principal Bedroom		
4.05m x 3.70m	13'3" x 12'1"	
Bedroom 2		
3.85m x 2.95m	12'7" x 9'8"	
Balcony		
1.65m x 3.50m	5'4" x 11'5"	

E3.16 – 2 bedroom apartment

Kitchen/Dining/Living		
7.10m x 3.60m	23'3" x 11'9"	
Principal Bedroom		
4.05m x 3.70m	13'3" x 12'1"	
Bedroom 2		
3.85m x 2.95m	12'7" x 9'8"	
Balcony		
1.65m x 3.50m	5'4" x 11'5"	

E3.17 – 2 bedroom apartment

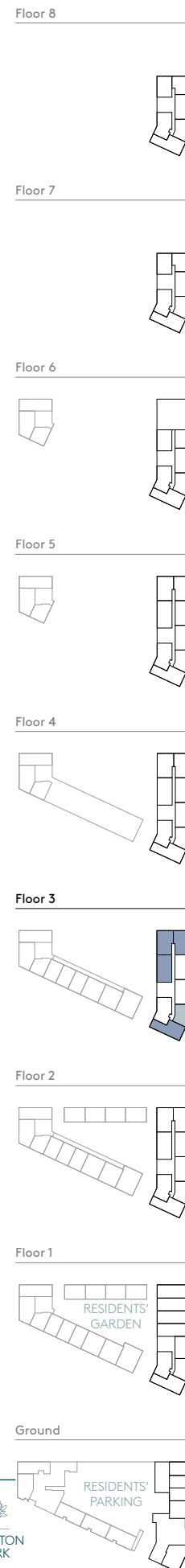
Kitchen/Dining/Living		
3.80m x 5.85m	12'5" x 19'2"	
Principal Bedroom		
4.75m x 3.00m	15'7" x 9'10"	
Bedroom 2		
3.45m x 2.50m	11'3" x 8'2"	
Balcony		
1.65m x 3.50m	5'4" x 11'5"	

1 bedroom apartment 2 bedroom apartment

C = Cupboard W = Wardrobe R = Riser Cupboard US = Utility Store WD = Washer/Dryer MVHR = MVHR
HIU = Heat Interface Unit = Indicative Wardrobe Position

All floorplans are not to scale. Layouts provide approximate measurements only and are subject to planning. Dimensions, which are taken from the indicated points of measurement, are for guidance only and are not intended to be used for window treatments or items of furniture. Bathroom and kitchen layouts are indicative only and are subject to change. Wardrobe size and position may vary. The total square footage given is an estimate only. In the event of your making an offer you should refer to the contract documentation for information and contractual provisions relating to net sales area. The information contained within this document does not constitute part of any offer, contract, or warranty. Whilst the plans have been prepared with all due care for the convenience of the intending purchaser, the information contained herein is a preliminary guide only.





THE EVERGREENS

FLOOR 3

E3.20 – 1 bedroom apartment

Kitchen/Dining/Living
3.70m x 5.80m 12'1" x 19'0"
Bedroom
4.00m x 3.85m 13'1" x 12'7"
Balcony
1.65m x 3.50m 5'4" x 11'5"

E3.19 – 2 bedroom apartment

Kitchen/Dining/Living
7.60m x 3.35m 24'11" x 10'11"
Principal Bedroom
5.20m x 2.65m 17'0" x 8'8"
Bedroom 2
3.35m x 3.40m 10'11" x 11'1"
Balcony
3.50m x 1.65m 11'5" x 5'4"

E3.23 – 2 bedroom apartment

Kitchen/Dining/Living
7.10m x 3.60m 23'3" x 11'9"
Principal Bedroom
4.05m x 3.70m 13'3" x 12'1"
Bedroom 2
3.85m x 2.95m 12'7" x 9'8"
Balcony
1.65m x 3.50m 5'4" x 11'5"

E3.24 – 2 bedroom apartment

Kitchen/Dining/Living
7.10m x 3.60m 23'3" x 11'9"
Principal Bedroom
4.05m x 3.70m 13'3" x 12'1"
Bedroom 2
3.85m x 2.95m 12'7" x 9'8"
Balcony
1.65m x 3.50m 5'4" x 11'5"

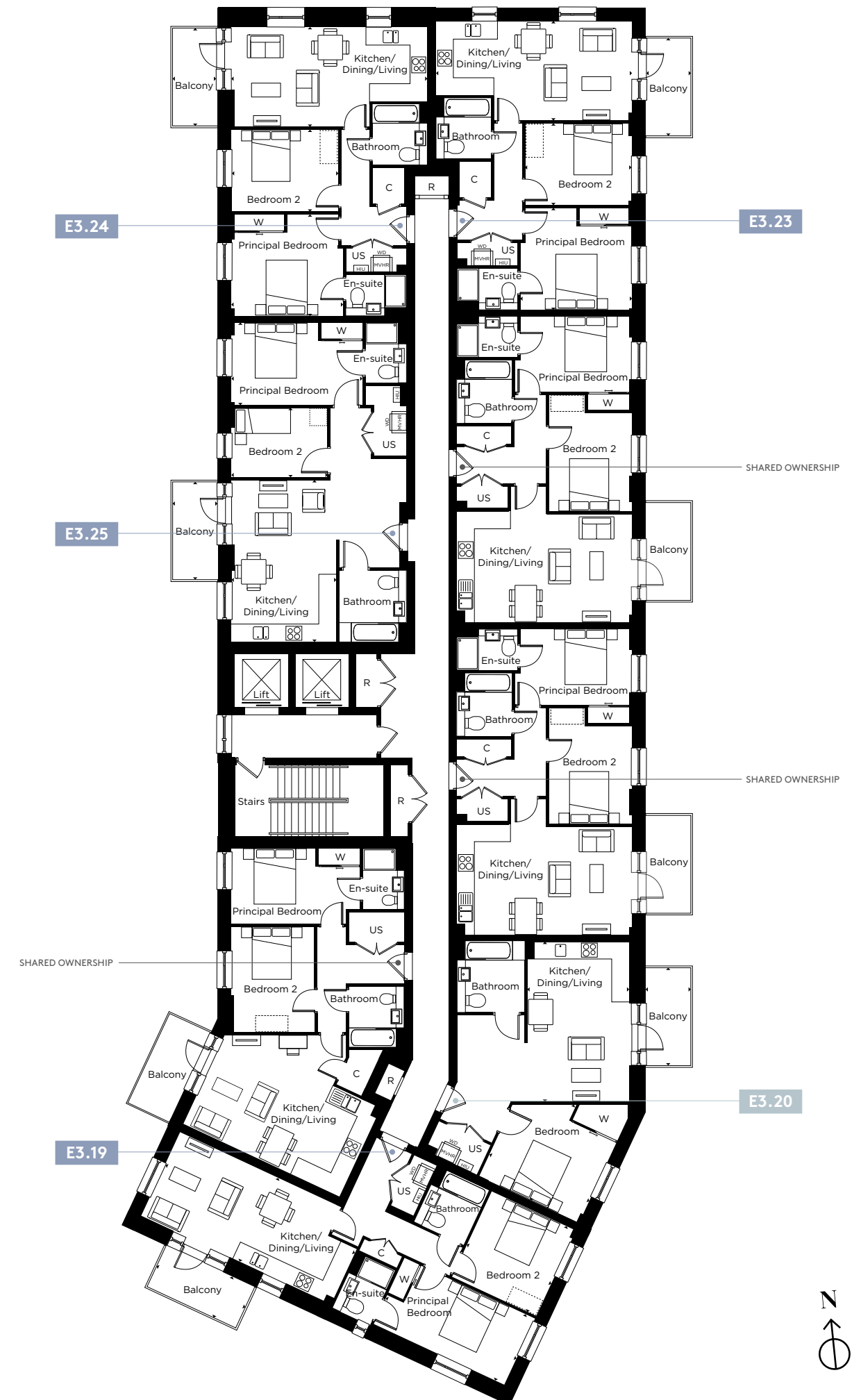
E3.25 – 2 bedroom apartment

Kitchen/Dining/Living
3.80m x 5.85m 12'5" x 19'2"
Principal Bedroom
4.75m x 3.00m 15'7" x 9'10"
Bedroom 2
3.45m x 2.50m 11'3" x 8'2"
Balcony
1.65m x 3.50m 5'4" x 11'5"

1 bedroom apartment 2 bedroom apartment

C = Cupboard W = Wardrobe R = Riser Cupboard US = Utility Store WD = Washer/Dryer MVHR = MVHR
HIU = Heat Interface Unit [] = Indicative Wardrobe Position

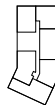
All floorplans are not to scale. Layouts provide approximate measurements only and are subject to planning. Dimensions, which are taken from the indicated points of measurement, are for guidance only and are not intended to be used for window treatments or items of furniture. Bathroom and kitchen layouts are indicative only and are subject to change. Wardrobe size and position may vary. The total square footage given is an estimate only. In the event of your making an offer you should refer to the contract documentation for information and contractual provisions relating to net sales area. The information contained within this document does not constitute part of any offer, contract, or warranty. Whilst the plans have been prepared with all due care for the convenience of the intending purchaser, the information contained herein is a preliminary guide only.



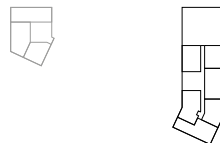
Floor 8



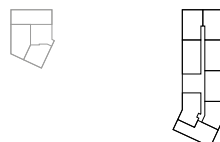
Floor 7



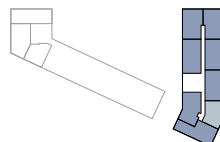
Floor 6



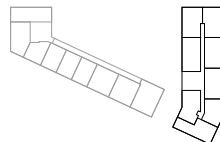
Floor 5



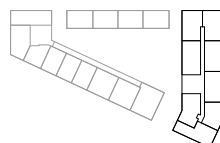
Floor 4



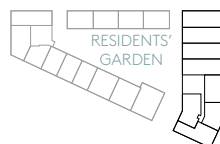
Floor 3



Floor 2



Floor 1



Ground



THE EVERGREENS

FLOOR 4

E3.28 – 1 bedroom apartment

Kitchen/Dining/Living
3.70m x 5.80m 12'1" x 19'0"
Bedroom
4.00m x 3.85m 13'1" x 12'7"
Balcony
1.65m x 3.50m 5'4" x 11'5"

E3.26 – 2 bedroom apartment

Kitchen/Dining/Living
6.25m x 4.00m 20'6" x 13'1"
Principal Bedroom
4.65m x 2.95m 15'3" x 9'8"
Bedroom 2
3.00m x 3.75m 9'10" x 12'3"
Balcony
1.65m x 3.50m 5'4" x 11'5"

E3.27 – 2 bedroom apartment

Kitchen/Dining/Living
7.60m x 3.35m 24'11" x 10'11"
Principal Bedroom
5.20m x 2.65m 17'0" x 8'8"
Bedroom 2
3.35m x 3.40m 10'11" x 11'1"
Balcony
3.50m x 1.65m 11'5" x 5'4"

E3.29 – 2 bedroom apartment

Kitchen/Dining/Living
6.35m x 4.00m 20'10" x 13'1"
Principal Bedroom
4.15m x 2.75m 13'7" x 9'0"
Bedroom 2
3.00m x 4.15m 9'10" x 13'7"
Balcony
1.65m x 3.50m 5'4" x 11'5"

E3.30 – 2 bedroom apartment

Kitchen/Dining/Living
6.35m x 4.00m 20'10" x 13'1"
Principal Bedroom
4.15m x 2.75m 13'7" x 9'0"
Bedroom 2
3.00m x 4.15m 9'10" x 13'7"
Balcony
1.65m x 3.50m 5'4" x 11'5"

E3.31 – 2 bedroom apartment

Kitchen/Dining/Living
7.10m x 3.60m 23'3" x 11'9"
Principal Bedroom
4.05m x 3.70m 13'3" x 12'1"
Bedroom 2
3.85m x 2.95m 12'7" x 9'8"
Balcony
1.65m x 3.50m 5'4" x 11'5"

E3.32 – 2 bedroom apartment

Kitchen/Dining/Living
7.10m x 3.60m 23'3" x 11'9"
Principal Bedroom
4.05m x 3.70m 13'3" x 12'1"
Bedroom 2
3.85m x 2.95m 12'7" x 9'8"
Balcony
1.65m x 3.50m 5'4" x 11'5"

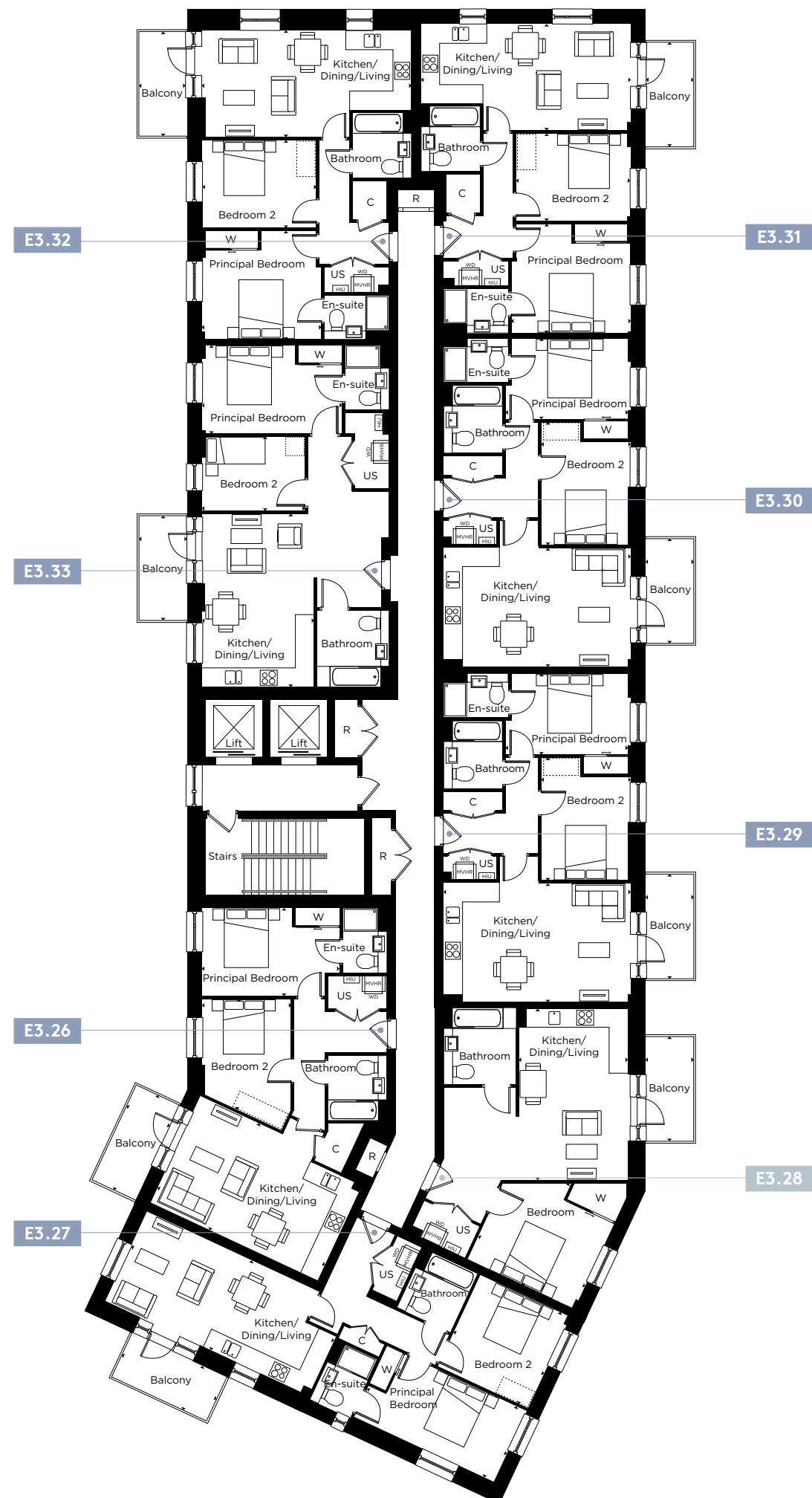
E3.33 – 2 bedroom apartment

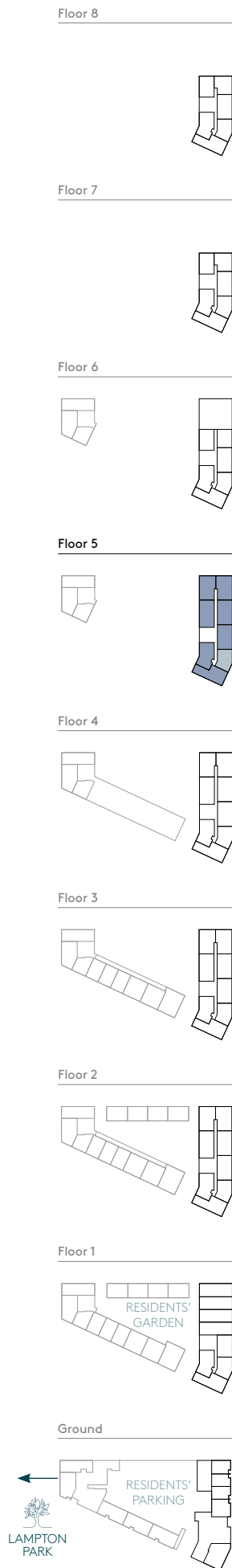
Kitchen/Dining/Living
3.80m x 5.85m 12'5" x 19'2"
Principal Bedroom
4.75m x 3.00m 15'7" x 9'10"
Bedroom 2
3.45m x 2.50m 11'3" x 8'2"
Balcony
1.65m x 3.50m 5'4" x 11'5"

1 bedroom apartment 2 bedroom apartment

C = Cupboard W = Wardrobe R = Riser Cupboard US = Utility Store WD = Washer/Dryer MVHR = MVHR
HIU = Heat Interface Unit = Indicative Wardrobe Position

All floorplans are not to scale. Layouts provide approximate measurements only and are subject to planning. Dimensions, which are taken from the indicated points of measurement, are for guidance only and are not intended to be used for window treatments or items of furniture. Bathroom and kitchen layouts are indicative only and are subject to change. Wardrobe size and position may vary. The total square footage given is an estimate only. In the event of your making an offer you should refer to the contract documentation for information and contractual provisions relating to net sales area. The information contained within this document does not constitute part of any offer, contract, or warranty. Whilst the plans have been prepared with all due care for the convenience of the intending purchaser, the information contained herein is a preliminary guide only.





THE EVERGREENS

FLOOR 5

E3.36 – 1 bedroom apartment

Kitchen/Dining/Living
3.70m x 5.80m 12'1" x 19'0"
Bedroom
4.00m x 3.85m 13'1" x 12'7"
Balcony
1.65m x 3.50m 5'4" x 11'5"

E3.34 – 2 bedroom apartment

Kitchen/Dining/Living
6.25m x 4.00m 20'6" x 13'1"
Principal Bedroom
4.65m x 2.95m 15'3" x 9'8"
Bedroom 2
3.00m x 3.75m 9'10" x 12'3"
Balcony
1.65m x 3.50m 5'4" x 11'5"

E3.35 – 2 bedroom apartment

Kitchen/Dining/Living
7.60m x 3.35m 24'11" x 10'11"
Principal Bedroom
5.20m x 2.65m 17'0" x 8'8"
Bedroom 2
3.35m x 3.40m 10'11" x 11'1"
Balcony
3.50m x 1.65m 11'5" x 5'4"

E3.37 – 2 bedroom apartment

Kitchen/Dining/Living
6.35m x 4.00m 20'10" x 13'1"
Principal Bedroom
4.15m x 2.75m 13'7" x 9'0"
Bedroom 2
3.00m x 4.15m 9'10" x 13'7"
Balcony
1.65m x 3.50m 5'4" x 11'5"

E3.38 – 2 bedroom apartment

Kitchen/Dining/Living
6.35m x 4.00m 20'10" x 13'1"
Principal Bedroom
4.15m x 2.75m 13'7" x 9'0"
Bedroom 2
3.00m x 4.15m 9'10" x 13'7"
Balcony
1.65m x 3.50m 5'4" x 11'5"

E3.39 – 2 bedroom apartment

Kitchen/Dining/Living
7.10m x 3.60m 23'3" x 11'9"
Principal Bedroom
4.05m x 3.70m 13'3" x 12'1"
Bedroom 2
3.85m x 2.95m 12'7" x 9'8"
Balcony
1.65m x 3.50m 5'4" x 11'5"

E3.40 – 2 bedroom apartment

Kitchen/Dining/Living
7.10m x 3.60m 23'3" x 11'9"
Principal Bedroom
4.05m x 3.70m 13'3" x 12'1"
Bedroom 2
3.85m x 2.95m 12'7" x 9'8"
Balcony
1.65m x 3.50m 5'4" x 11'5"

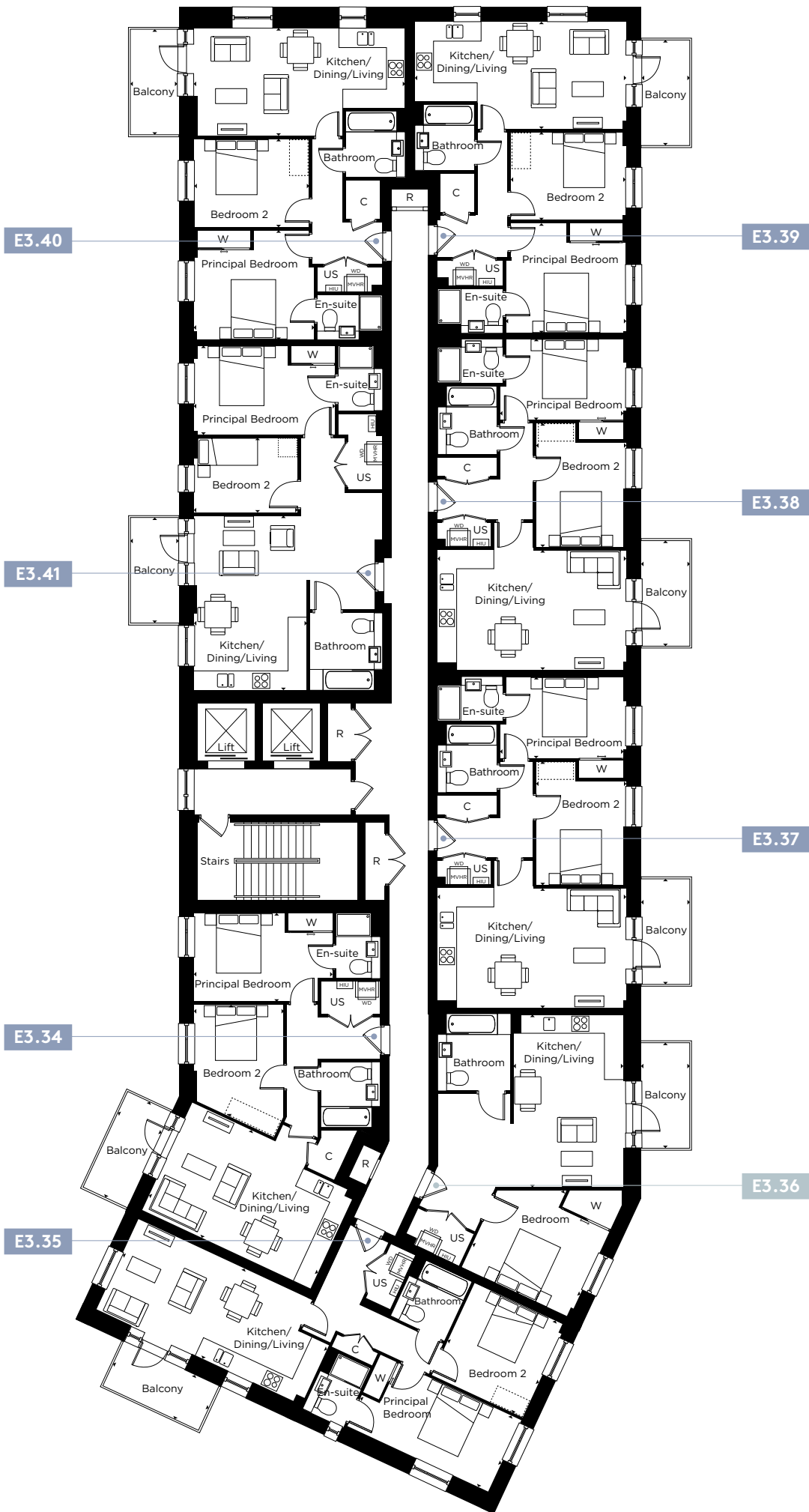
E3.41 – 2 bedroom apartment

Kitchen/Dining/Living
3.80m x 5.85m 12'5" x 19'2"
Principal Bedroom
4.75m x 3.00m 15'7" x 9'10"
Bedroom 2
3.45m x 2.50m 11'3" x 8'2"
Balcony
1.65m x 3.50m 5'4" x 11'5"

1 bedroom apartment 2 bedroom apartment

C = Cupboard W = Wardrobe R = Riser Cupboard US = Utility Store WD = Washer/Dryer MVHR = MVHR
HIU = Heat Interface Unit [] = Indicative Wardrobe Position

All floorplans are not to scale. Layouts provide approximate measurements only and are subject to planning. Dimensions, which are taken from the indicated points of measurement, are for guidance only and are not intended to be used for window treatments or items of furniture. Bathroom and kitchen layouts are indicative only and are subject to change. Wardrobe size and position may vary. The total square footage given is an estimate only. In the event of your making an offer you should refer to the contract documentation for information and contractual provisions relating to net sales area. The information contained within this document does not constitute part of any offer, contract, or warranty. Whilst the plans have been prepared with all due care for the convenience of the intending purchaser, the information contained herein is a preliminary guide only.



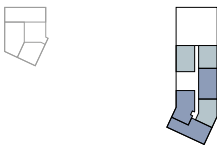
Floor 8



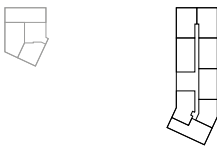
Floor 7



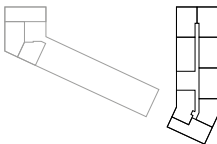
Floor 6



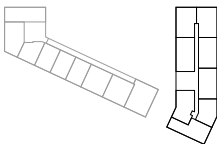
Floor 5



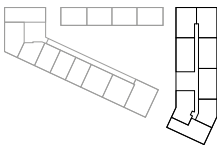
Floor 4



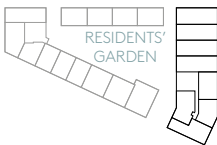
Floor 3



Floor 2



Floor 1



Ground



THE EVERGREENS

FLOOR 6

E3.44 – 1 bedroom apartment

Kitchen/Dining/Living
3.70m x 5.80m 12'1" x 19'0"
Bedroom
4.00m x 3.85m 13'1" x 12'7"
Balcony
1.65m x 3.50m 5'4" x 11'5"

E3.46 – 1 bedroom apartment

Kitchen/Dining/Living
6.15m x 4.60m 20'2" x 15'1"
Bedroom
3.10m x 3.80m 10'2" x 12'5"
Balcony
1.65m x 3.50m 5'4" x 11'5"

E3.47 – 1 bedroom apartment

Kitchen/Dining/Living
6.35m x 4.75m 10'11" x 15'7"
Bedroom
3.55m x 4.35m 11'7" x 14'3"
Balcony
1.65m x 3.50m 5'4" x 11'5"

E3.42 – 2 bedroom apartment

Kitchen/Dining/Living
6.25m x 4.00m 20'6" x 13'1"
Principal Bedroom
4.65m x 2.95m 15'3" x 9'8"
Bedroom 2
3.00m x 3.75m 9'10" x 12'3"
Balcony
1.65m x 3.50m 5'4" x 11'5"

E3.43 – 2 bedroom apartment

Kitchen/Dining/Living
7.60m x 3.35m 24'11" x 10'11"
Principal Bedroom
5.20m x 2.65m 17'0" x 8'8"
Bedroom 2
3.35m x 3.40m 10'11" x 11'1"
Balcony
3.50m x 1.65m 11'5" x 5'4"

E3.45 – 2 bedroom apartment

Kitchen/Dining/Living
6.35m x 4.00m 20'10" x 13'1"
Principal Bedroom
4.15m x 2.75m 13'7" x 9'0"
Bedroom 2
3.00m x 4.15m 9'10" x 13'7"
Balcony
1.65m x 3.50m 5'4" x 11'5"

1 bedroom apartment 2 bedroom apartment

C = Cupboard W = Wardrobe R = Riser Cupboard US = Utility Store WD = Washer/Dryer MVHR = MVHR
HIU = Heat Interface Unit [] = Indicative Wardrobe Position

All floorplans are not to scale. Layouts provide approximate measurements only and are subject to planning. Dimensions, which are taken from the indicated points of measurement, are for guidance only and are not intended to be used for window treatments or items of furniture. Bathroom and kitchen layouts are indicative only and are subject to change. Wardrobe size and position may vary. The total square footage given is an estimate only. In the event of your making an offer you should refer to the contract documentation for information and contractual provisions relating to net sales area. The information contained within this document does not constitute part of any offer, contract, or warranty. Whilst the plans have been prepared with all due care for the convenience of the intending purchaser, the information contained herein is a preliminary guide only.



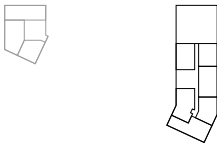
Floor 8



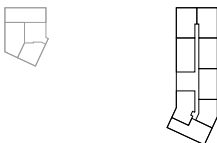
Floor 7



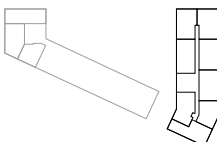
Floor 6



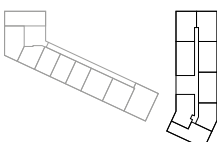
Floor 5



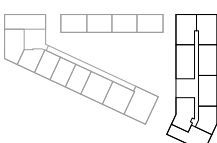
Floor 4



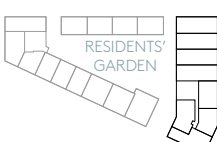
Floor 3



Floor 2



Floor 1



Ground



THE EVERGREENS

FLOOR 7

E3.50 – 1 bedroom apartment

Kitchen/Dining/Living
3.70m x 5.80m 12'1" x 19'0"
Bedroom
4.00m x 3.85m 13'1" x 12'7"
Balcony
1.65m x 3.50m 5'4" x 11'5"

E3.52 – 1 bedroom apartment

Kitchen/Dining/Living
7.75m x 4.25m 25'5" x 13'11"
Bedroom
3.85m x 4.05m 12'7" x 13'3"
Balcony
1.65m x 3.50m 5'4" x 11'5"

E3.53 – 1 bedroom apartment

Kitchen/Dining/Living
6.35m x 4.75m 10'11" x 15'7"
Bedroom
3.55m x 4.35m 11'7" x 14'3"
Balcony
1.65m x 3.50m 5'4" x 11'5"

E3.48 – 2 bedroom apartment

Kitchen/Dining/Living
6.25m x 4.00m 20'6" x 13'1"
Principal Bedroom
4.65m x 2.95m 15'3" x 9'8"
Bedroom 2
3.00m x 3.75m 9'10" x 12'3"
Balcony
1.65m x 3.50m 5'4" x 11'5"

E3.49 – 2 bedroom apartment

Kitchen/Dining/Living
7.60m x 3.35m 24'11" x 10'11"
Principal Bedroom
5.20m x 2.65m 17'0" x 8'8"
Bedroom 2
3.35m x 3.40m 10'11" x 11'1"
Balcony
3.50m x 1.65m 11'5" x 5'4"

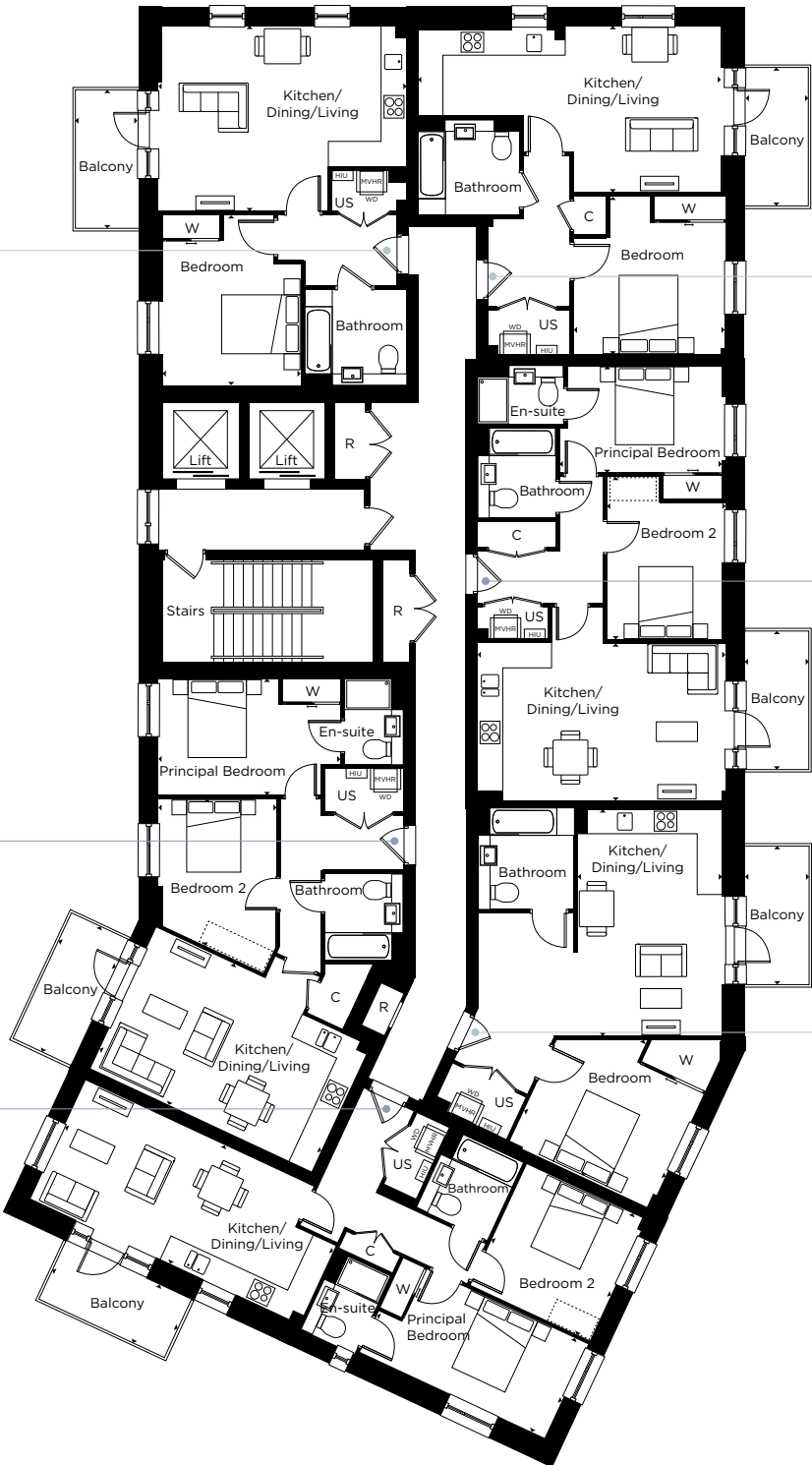
E3.51 – 2 bedroom apartment

Kitchen/Dining/Living
6.35m x 4.00m 20'10" x 13'1"
Principal Bedroom
4.15m x 2.75m 13'7" x 9'0"
Bedroom 2
3.00m x 4.15m 9'10" x 13'7"
Balcony
1.65m x 3.50m 5'4" x 11'5"

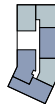
1 bedroom apartment 2 bedroom apartment

C = Cupboard W = Wardrobe R = Riser Cupboard US = Utility Store WD = Washer/Dryer MVHR = MVHR
HIU = Heat Interface Unit = Indicative Wardrobe Position

All floorplans are not to scale. Layouts provide approximate measurements only and are subject to planning. Dimensions, which are taken from the indicated points of measurement, are for guidance only and are not intended to be used for window treatments or items of furniture. Bathroom and kitchen layouts are indicative only and are subject to change. Wardrobe size and position may vary. The total square footage given is an estimate only. In the event of your making an offer you should refer to the contract documentation for information and contractual provisions relating to net sales area. The information contained within this document does not constitute part of any offer, contract, or warranty. Whilst the plans have been prepared with all due care for the convenience of the intending purchaser, the information contained herein is a preliminary guide only.



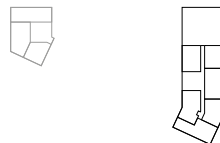
Floor 8



Floor 7



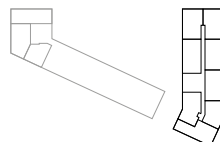
Floor 6



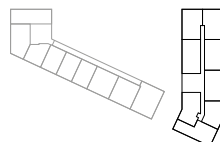
Floor 5



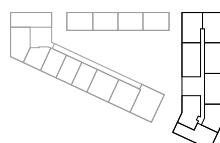
Floor 4



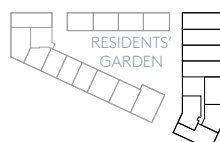
Floor 3



Floor 2



Floor 1



Ground



THE EVERGREENS

FLOOR 8

E3.56 – 1 bedroom apartment

Kitchen/Dining/Living
3.70m x 5.80m 12'1" x 19'0"
Bedroom
4.00m x 3.85m 13'1" x 12'7"
Balcony
1.65m x 3.50m 5'4" x 11'5"

E3.58 – 1 bedroom apartment

Kitchen/Dining/Living
7.75m x 4.25m 25'5" x 13'11"
Bedroom
3.85m x 4.05m 12'7" x 13'3"
Balcony
1.65m x 3.50m 5'4" x 11'5"

E3.59 – 1 bedroom apartment

Kitchen/Dining/Living
6.35m x 4.75m 10'11" x 15'7"
Bedroom
3.55m x 4.35m 11'7" x 14'3"
Balcony
1.65m x 3.50m 5'4" x 11'5"

E3.54 – 2 bedroom apartment

Kitchen/Dining/Living
6.25m x 4.00m 20'6" x 13'1"
Principal Bedroom
4.65m x 2.95m 15'3" x 9'8"
Bedroom 2
3.00m x 3.75m 9'10" x 12'3"
Balcony
1.65m x 3.50m 5'4" x 11'5"

E3.55 – 2 bedroom apartment

Kitchen/Dining/Living
7.60m x 3.35m 24'11" x 10'11"
Principal Bedroom
5.20m x 2.65m 17'0" x 8'8"
Bedroom 2
3.35m x 3.40m 10'11" x 11'1"
Balcony
3.50m x 1.65m 11'5" x 5'4"

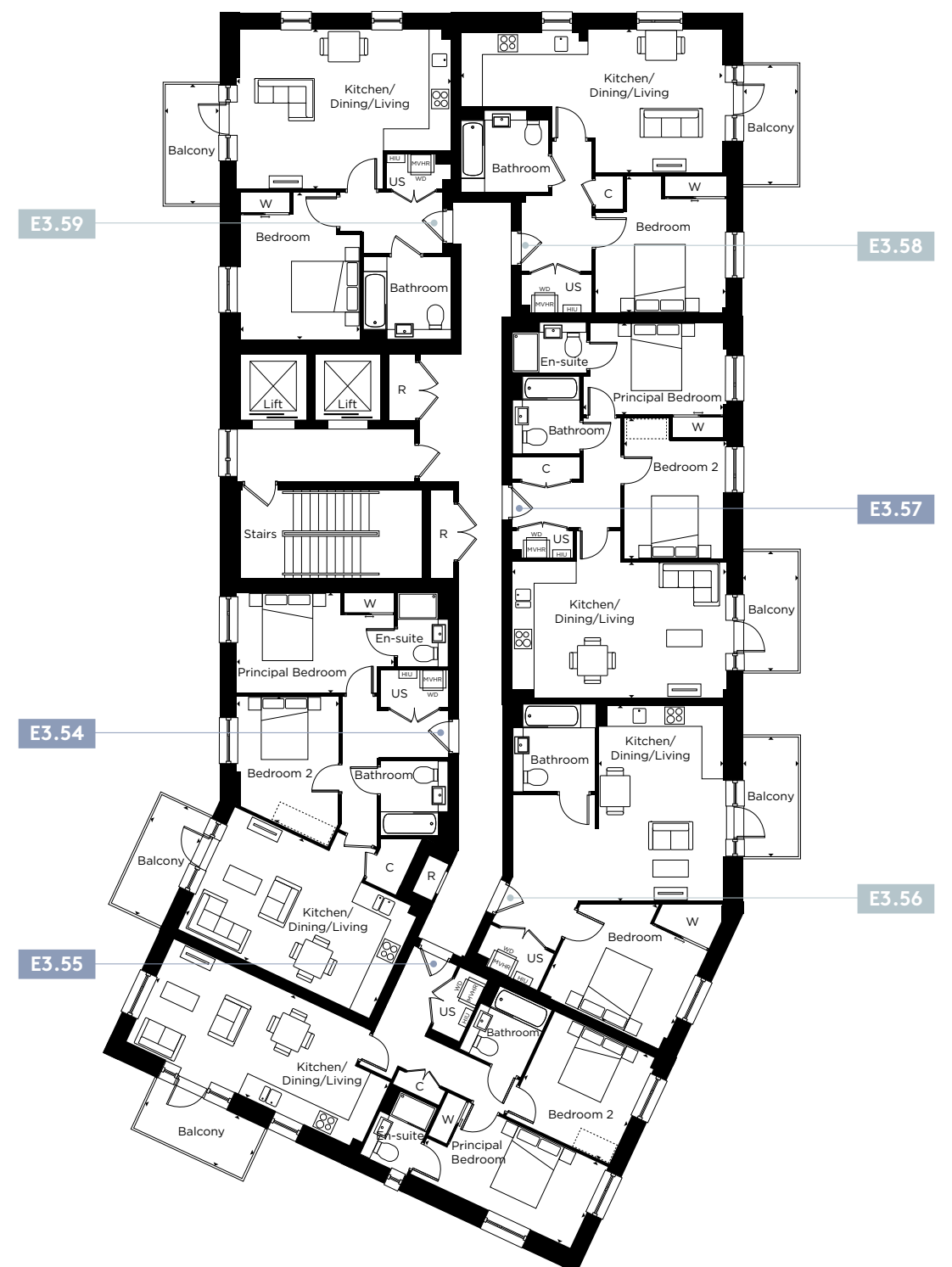
E3.57 – 2 bedroom apartment

Kitchen/Dining/Living
6.35m x 4.00m 20'10" x 13'1"
Principal Bedroom
4.15m x 2.75m 13'7" x 9'0"
Bedroom 2
3.00m x 4.15m 9'10" x 13'7"
Balcony
1.65m x 3.50m 5'4" x 11'5"

1 bedroom apartment 2 bedroom apartment

C = Cupboard W = Wardrobe R = Riser Cupboard US = Utility Store WD = Washer/Dryer MVHR = MVHR
HIU = Heat Interface Unit = Indicative Wardrobe Position

All floorplans are not to scale. Layouts provide approximate measurements only and are subject to planning. Dimensions, which are taken from the indicated points of measurement, are for guidance only and are not intended to be used for window treatments or items of furniture. Bathroom and kitchen layouts are indicative only and are subject to change. Wardrobe size and position may vary. Affordable housing is indicative and can be moved. The information contained within this document does not constitute part of any offer, contract or warranty. Whilst the plans have been prepared with all due care for the convenience of the intending purchaser, the information contained herein is a preliminary guide only.



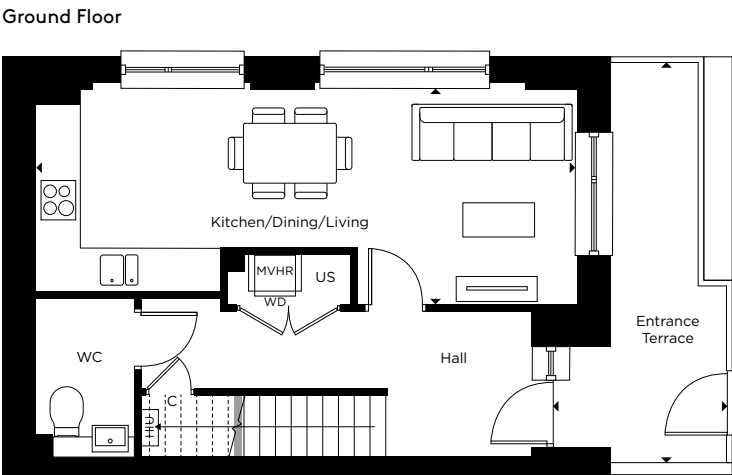
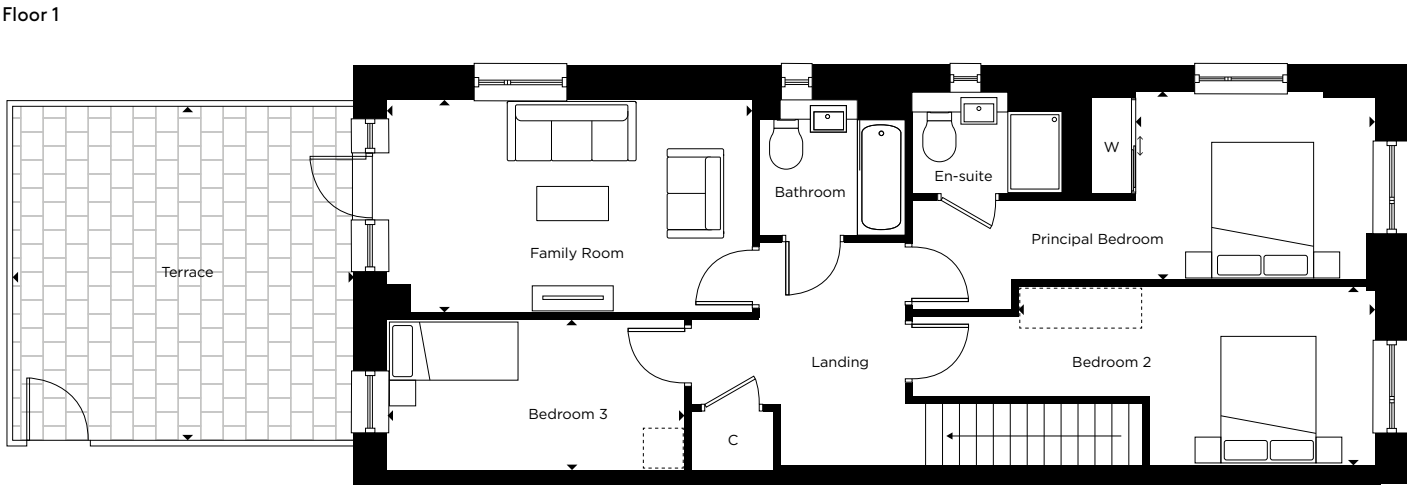
THE EVERGREENS

DUPLEX APARTMENTS



THE EVERGREENS

E3.1 – 3 BEDROOM DUPLEX



Ground floor

Kitchen/Dining/Living
7.95m x 3.25m 26'0" x 10'7"

Entrance Terrace
1.70m x 5.85m 5'9" x 19'2"

Floor 1

Family Room
5.35m x 3.10m 17'6" x 10'2"

Principal Bedroom
3.50m x 2.75m 11'5" x 9'0"

Bedroom 2
5.25m x 2.60m 17'2" x 8'6"

Bedroom 3
4.35m x 2.20m 14'3" X 7'2"

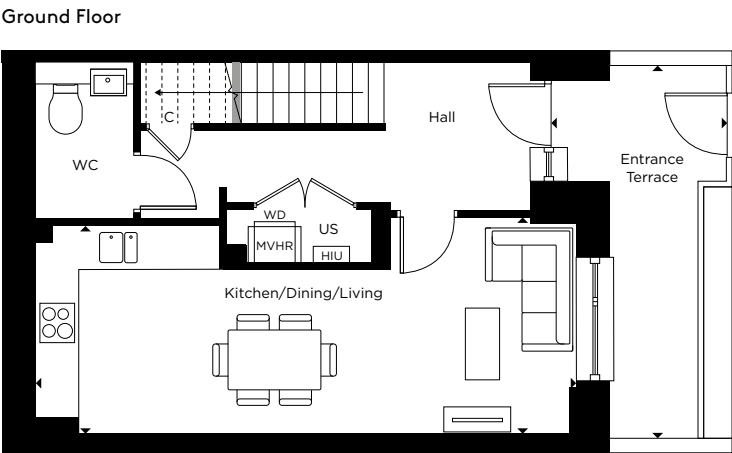
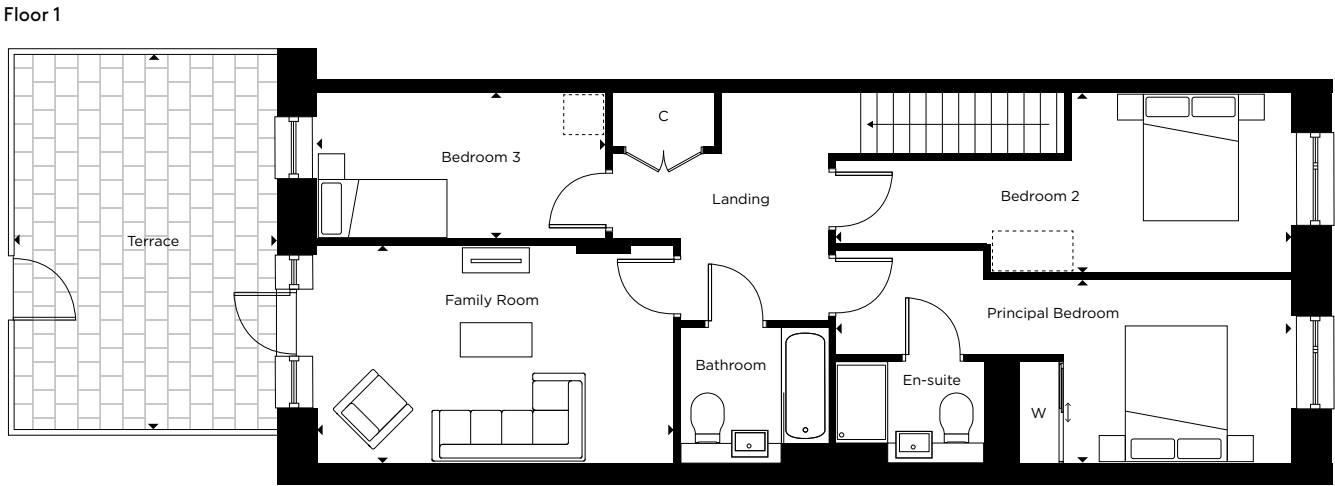
Terrace
4.95m x 4.90m 16'2" x 16'0"

C = Cupboard W = Wardrobe US = Utility Store WD = Washer/Dryer MVHR = MVHR
HIU = Heat Interface Unit [] = Indicative Wardrobe Position

All floorplans are not to scale. Layouts provide approximate measurements only and are subject to planning. Dimensions, which are taken from the indicated points of measurement, are for guidance only and are not intended to be used for window treatments or items of furniture. Bathroom and kitchen layouts are indicative only and are subject to change. Wardrobe size and position may vary. Affordable housing is indicative and can be moved. The information contained within this document does not constitute part of any offer, contract or warranty. Whilst the plans have been prepared with all due care for the convenience of the intending purchaser, the information contained herein is a preliminary guide only.

THE EVERGREENS

E3.2 – 3 BEDROOM DUPLEX



Ground floor

Kitchen/Dining/Living
7.95m x 3.20m 26'0" x 10'5"

Entrance Terrace
1.30m x 5.45m 4'3" x 17'10"

Floor 1

Family Room
5.25m x 3.20m 17'2" x 10'5"

Principal Bedroom
6.70m x 2.75m 21'11" x 9'0"

Bedroom 2
6.70m x 2.65m 21'11" x 8'8"

Bedroom 3
4.25m x 2.15m 13'11" x 7'0"

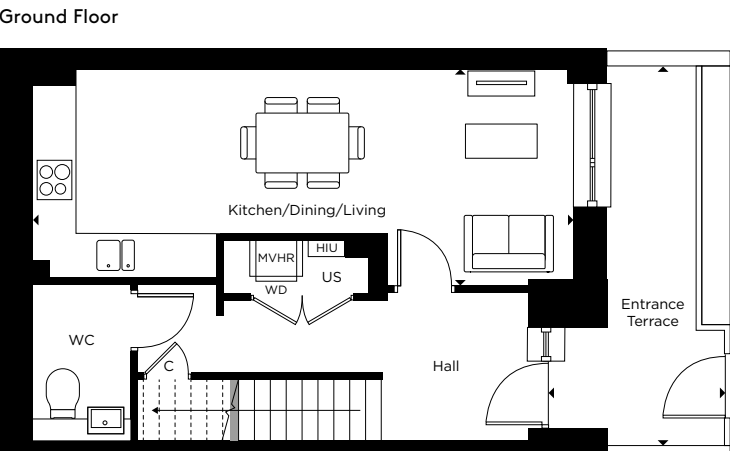
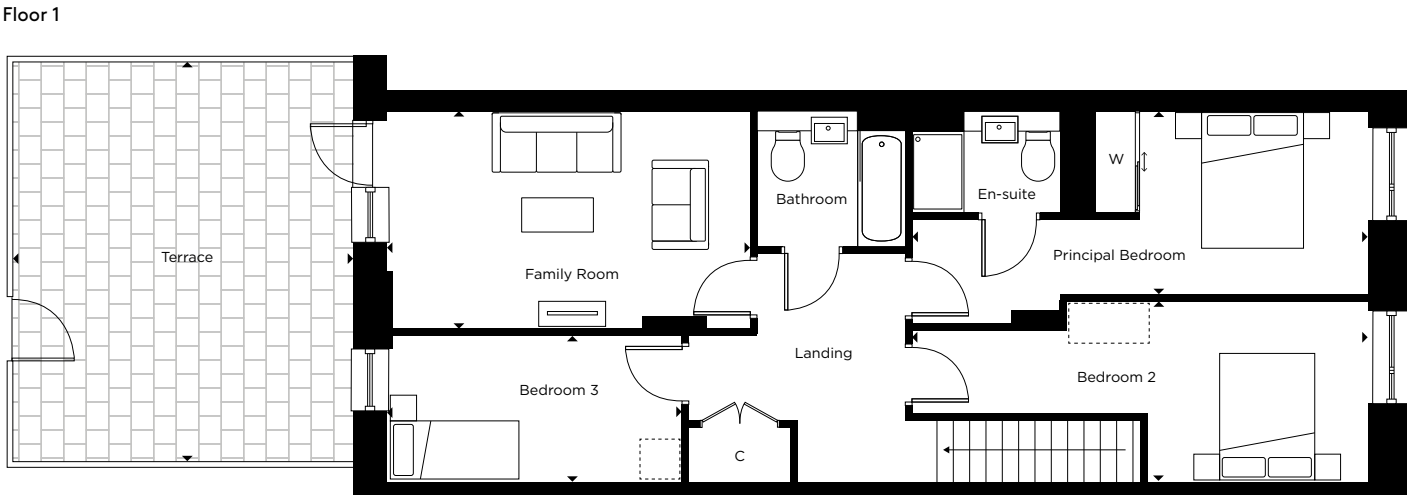
Terrace
3.85m x 5.50m 12'7" x 18'0"

C = Cupboard W = Wardrobe US = Utility Store WD = Washer/Dryer MVHR = MVHR
HIU = Heat Interface Unit [] = Indicative Wardrobe Position

All floorplans are not to scale. Layouts provide approximate measurements only and are subject to planning. Dimensions, which are taken from the indicated points of measurement, are for guidance only and are not intended to be used for window treatments or items of furniture. Bathroom and kitchen layouts are indicative only and are subject to change. Wardrobe size and position may vary. Affordable housing is indicative and can be moved. The information contained within this document does not constitute part of any offer, contract or warranty. Whilst the plans have been prepared with all due care for the convenience of the intending purchaser, the information contained herein is a preliminary guide only.

THE EVERGREENS

E3.3 – 3 BEDROOM DUPLEX



Ground floor

Kitchen/Dining/Living
7.95m x 3.20m 26'0" x 10'5"

Entrance Terrace
1.30m x 5.55m 4'3" x 18'2"

Floor 1

Family Room
5.35m x 3.20m 17'6" x 10'5"

Principal Bedroom
6.70m x 2.75m 21'11" x 9'0"

Bedroom 2
6.70m x 2.65m 21'11" x 8'8"

Bedroom 3
4.35m x 2.15m 14'3" x 7'0"

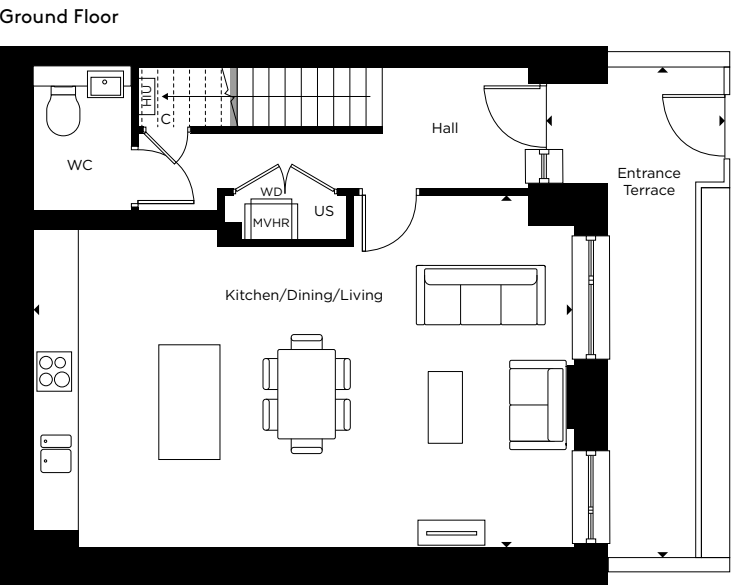
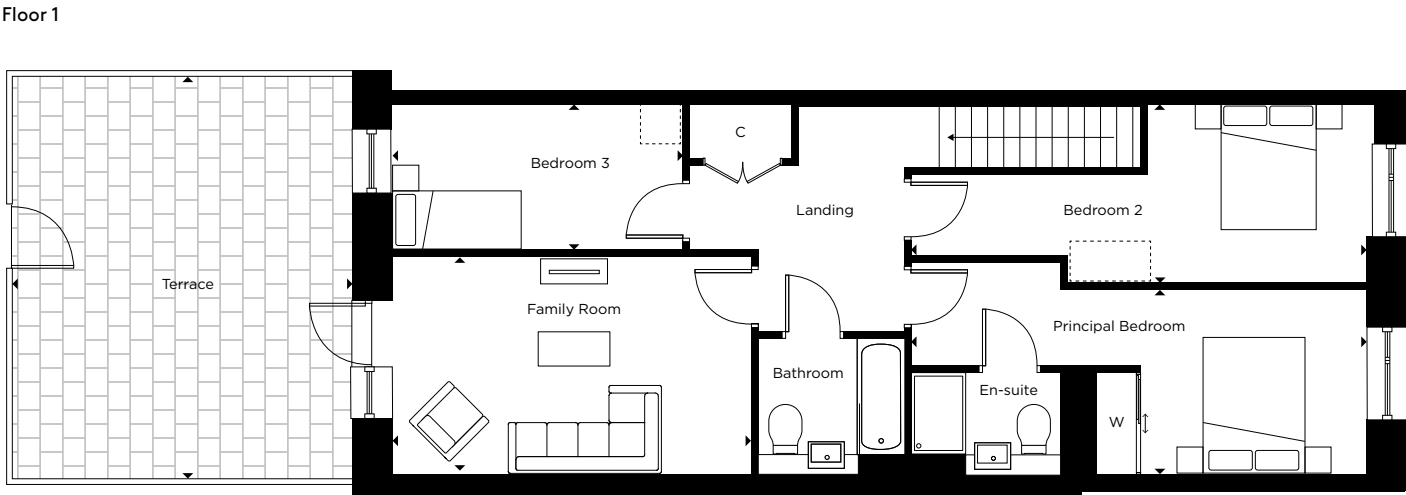
Terrace
5.00m x 5.85m 16'4" x 19'2"

C = Cupboard W = Wardrobe US = Utility Store WD = Washer/Dryer MVHR = MVHR
HIU = Heat Interface Unit [] = Indicative Wardrobe Position

All floorplans are not to scale. Layouts provide approximate measurements only and are subject to planning. Dimensions, which are taken from the indicated points of measurement, are for guidance only and are not intended to be used for window treatments or items of furniture. Bathroom and kitchen layouts are indicative only and are subject to change. Wardrobe size and position may vary. Affordable housing is indicative and can be moved. The information contained within this document does not constitute part of any offer, contract or warranty. Whilst the plans have been prepared with all due care for the convenience of the intending purchaser, the information contained herein is a preliminary guide only.

THE EVERGREENS

E3.4 – 3 BEDROOM DUPLEX



Ground floor

Kitchen/Dining/Living
7.95m x 5.15m 25'0" x 16'10"

Entrance Terrace
1.30m x 7.20m 4'3" x 23'7"

Floor 1

Family Room
5.25m x 3.20m 17'2" x 10'5"

Principal Bedroom
6.80m x 2.75m 22'3" x 9'0"

Bedroom 2
6.80m x 2.65m 22'3" x 8'8"

Bedroom 3
4.35m x 2.10m 14'3" x 6'10"

Terrace
5.00m x 5.90m 16'4" x 19'4"

C = Cupboard W = Wardrobe US = Utility Store WD = Washer/Dryer MVHR = MVHR
HIU = Heat Interface Unit [] = Indicative Wardrobe Position

All floorplans are not to scale. Layouts provide approximate measurements only and are subject to planning. Dimensions, which are taken from the indicated points of measurement, are for guidance only and are not intended to be used for window treatments or items of furniture. Bathroom and kitchen layouts are indicative only and are subject to change. Wardrobe size and position may vary. Affordable housing is indicative and can be moved. The information contained within this document does not constitute part of any offer, contract or warranty. Whilst the plans have been prepared with all due care for the convenience of the intending purchaser, the information contained herein is a preliminary guide only.



WORKING TOGETHER TO CREATE

OUTSTANDING HOMES

LAMPTON PARKSIDE IS A VISIONARY COLLABORATION
BETWEEN HILL AND NOTTING HILL GENESIS, BRINGING TOGETHER
FIVE STAR HOUSEBUILDING WITH A COMMITMENT TO MAINTAINING
A DIVERSE AND THRIVING COMMUNITY.



The Hill Group is a top 10 housebuilder* and one of the leading developers in London, the home counties, and the South. The company is renowned for its partnership ethos, specialising in the building of distinctive new places and communities where people want to live, work, and socialise.

In its 25th year, this family-owned and operated company has grown to establish itself as the UK's second-largest privately-owned housebuilder, with an impressive and diverse portfolio of projects ranging from landmark, mixed-use regenerations, and inner-city apartment developments to homes in rural communities.

Employing over 950 staff, the company operates from six strategically located regional offices including Bristol and Abingdon to help facilitate growth in the South West and the Midlands, with its head office based in Waltham Abbey, Essex.

Hill completed 2,886 homes in the last financial year and has a controlled development pipeline of over 8,800 homes. Around half of its portfolio is in joint ventures to deliver a range of mixed-tenure developments, reflecting Hill's commitment to partnerships with government, local authorities, housing associations, and private clients.

Since the company was founded in 1999, Hill has won over 500 industry awards, including the esteemed title of WhatHouse? Housebuilder of the Year in 2015, 2020 and 2023. Most recently in 2024, Millside Grange in Croyley Green also won The Standard's Homes & Property Award for Best Commuter Home.

In addition, Hill's dedication to delivering the highest quality homes and exceptional customer service has earned the housebuilder its 5-star status in the Home Builders Federation's annual Customer Satisfaction Survey for the past eight years. With a score of 4.8 out of 5, Hill is also ranked as the number one housebuilder on Trustpilot.

Hill is donating 200 fully equipped modular homes to local authorities and homeless charities as part of a £15 million pledge through its Foundation 200 programme, launched in 2019 to mark Hill's 20th anniversary.

Follow us on Instagram @CreatedbyHill



At Notting Hill Genesis, we build and maintain quality affordable homes, creating diverse and thriving communities.

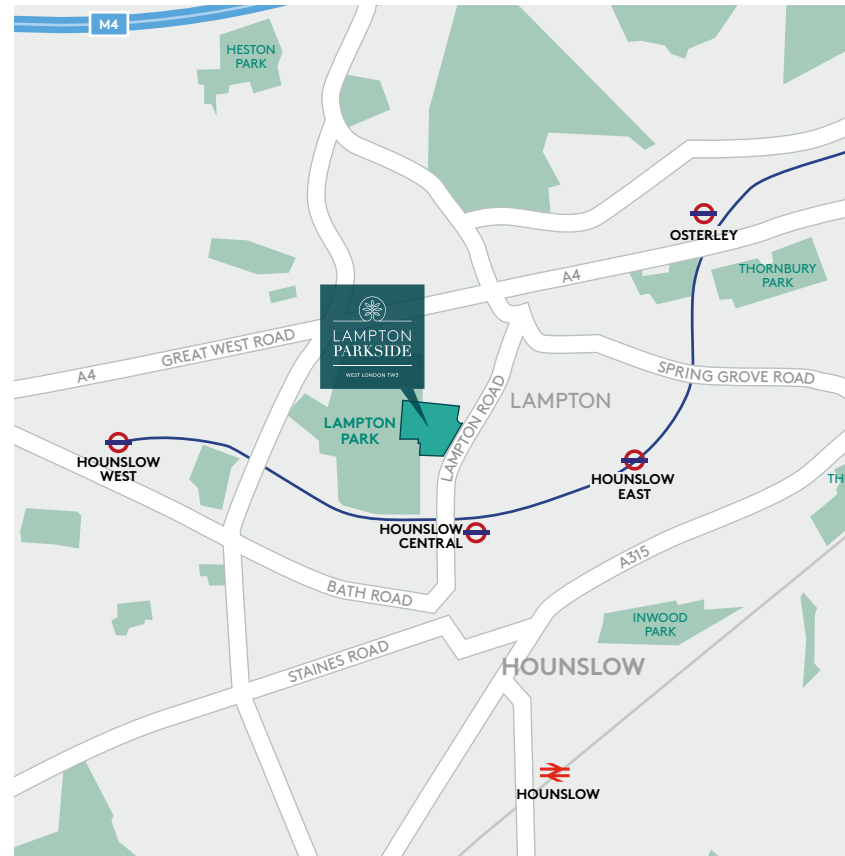
Notting Hill Genesis are one of the largest housing associations in London and the south-east, owning and managing more than 66,000 homes. We provide homes across a range of tenures, are a leading provider of Shared Ownership, and are committed to realising our vision, which is to provide homes that build a better place for all.

Our focus is our customers. We put their needs at the heart of our structures, processes and systems and they drive our decisions each and every day. We want them to be proud of the place they call home and from where they can begin to build lives, communities and futures.



*The Hill Group was listed within the top 10 of the Top 150 UK Contractors and Housebuilders published by Building.co.uk in December 2024

HOW TO FIND US



Lampton Parkside Sales Suite
Lampton Road
TW3 4FD

020 3959 0900
lamptonparkside.co.uk

This brochure, and the description and measurements herein, do not form any part of a contract. Whilst every effort has been made to ensure accuracy, this cannot always be guaranteed. Site layouts, and specifications are taken from drawings which were correct at the time of print. The information and imagery contained in this brochure is for guidance purposes only and does not constitute a contract, part of contract or warranty. Images of the Lampton Parkside properties are computer generated and the landscaping may have been enhanced. Details correct at time of going to print.

lamptonparkside.co.uk

A UNIQUE COLLABORATION BETWEEN

